

# Wall Mount Cabinet

Regional Availability - Global

Siemon's feature-rich Wall Mount Cabinet saves valuable floor space while providing a cost-effective means to secure and protect network equipment from dust, tampering, and other hazards. Designed with excellent cable management, easy rear access and a fully adjustable mounting rail system, the Wall Mount Cabinet is extremely versatile for a wide range of applications. It is ideal as a mini telecommunications room or for remote network distribution and consolidation points in open, unprotected spaces such as warehouses, retail facilities and schools. This EIA/ECA and UL 60950-compliant Wall Mount Cabinet is also ideal for zone cabling in intelligent building applications, passive optical networks, or wherever more expensive full-size cabinets are not required. It is compatible with Siemon VersaPOD® fan kits, rack-mount PDUs, shelves and other accessories.

## Sturdiness

14/16 gauge steel design supports up to (91kg) 200 lb. load capacity per UL 60950

## Cable Management

Fully integrated vertical cable management at the front and rear

## Rear Access

203x203mm (8x8 in.) rear entry opening available to support in-wall cabling

## Secure

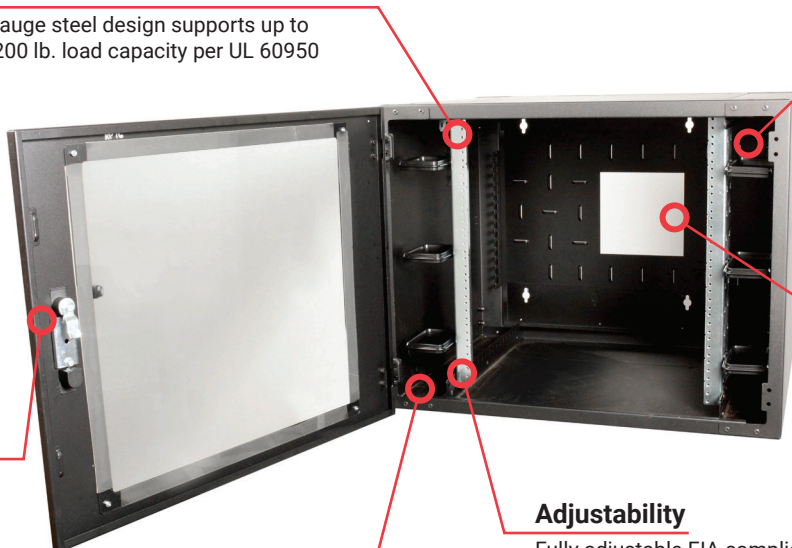
Plexi, solid or vented locking front door with swivel handle and rear locking back plate

## Adjustability

Fully adjustable EIA compliant mounting rail system with #12-24 tapped holes  
*\*Front mounting rail only, rear rails may be ordered separately*

## Multiple Sizes

Heights: 12U, 18U, 24U  
Depths: 610mm and 762mm (24 in. and 30 in.)  
Width: 736mm (29 in.)



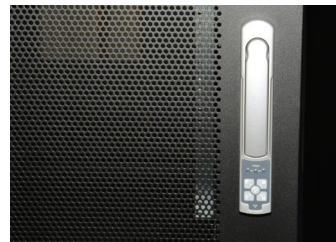
## Accessibility

Easy rear access to equipment and wiring with right-or left-hinged back plate design



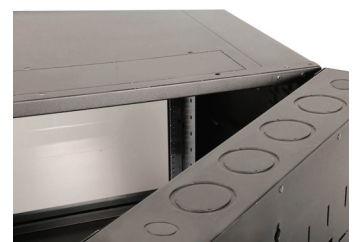
## Front Cable Management

Integrated vertical cable management at front of cabinet provides means to route patch cords vertically within cabinet



## Intelligent Ready

Standard swing handle can be easily retrofitted with 3rd party card or biometric handles for high security applications



## Cable Entry

(4) concentric 63.5 / 76.2mm (2.5 / 3 in.) and (2) 19mm (0.75 in.) cable entry knockouts at the top and bottom of the back plate

# Product Information

## Wall Mount Specifications

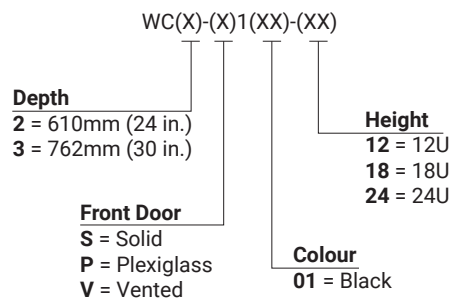
Parameter	Description
Height	12U: 584mm (23 in.) 18U: 864mm (34 in.) 24U: 1118mm (44 in.)
Width	737mm (29 in.)
Depth - External (Door to Door)	WC2: 610mm (24 in.) WC3: 762mm (30 in.)
Depth - Usable (Rail-to-Rail Max.)	WC2: 394mm (15.5 in.) WC3: 546mm (21.5 in.)
Weight*	WC2 12U: 36kg (80 lbs.) WC2 18U: 48kg (105 lbs.) WC2 24U: 59kg (130 lbs.) WC3 12U: 45kg (100 lbs.) WC3 18U: 57kg (125 lbs.) WC3 24U: 68kg (150 lbs.)
Load Rating	91kg (200 lbs.)
Color	Graphite Black (RAL 9011)
% Door Perforation	41%
U Space Identification	Equipment Rail Notches
Backplate Cable Access Openings	(4) 3.5" and (2) 1.25" knockouts on top and bottom; (1) 8" x 8" on rear
Material	14/16 gauge steel
Finish	Textured powder coat
Standards Compliance	EIA/ECA-310-E UL 60950 NEMA Type 1 Enclosure IP20 Rated

*\*Does not include packaging*

Wall Mount Cabinets are also available as Siemon's V-Built® Customised Pre-configured Cabinet Solutions, where each cabinet is identified by one unique customer-specific part number, preloaded with Siemon components and packaged at one of our regional Siemon manufacturing facilities. This speeds deployment time and reduces on site packaging waste. Contact Siemon for more information.

# Ordering Information

## Wall Mount Cabinet



## Wall Mount Cabinet Accessories

Part Number	Description
VP-FAN	Top-mount cooling fan panel, 2 fans x 110CFM, 120VAC w/NEMA 5-15P plug
VP-FAN-220	Top-mount cooling fan panel, 3 fans x 110CFM, 220VAC w/C13 plug
VP-GRD	Grounding kit - Includes ground bar, ground wire, mounting hardware, and accessories (capacity to support all required grounding connections for a single cabinet)
WC-R-1-(XX)	Wall mount cabinet mounting rails (set of 2) Use (XX) to specify height. 12 = 12U, 18 = 18U, 24 = 24U
WC-FLTRKIT-(XX)	Wall mount cabinet louver filter and bracket (set of 2) Use (XX) to specify color. 01 = Black
WC-REPFLTR	Wall mount cabinet replacement filter for louver filter kit

Because we continuously improve our products, Siemon reserves the right to change specifications and availability without prior notice.

<b>North America</b> P: (1) 860 945 4200	<b>Mexico</b> P: (521) 556 387 7708/09/10	<b>Latin America</b> P: (571) 657 1950/51/52	<b>Europe</b> P: (44) 0 1932 571771	<b>China</b> P: (86) 215385 0303	<b>India, Middle East &amp; Africa</b> P: (971) 4 3689743
<b>Asia Pacific</b> P: (61) 2 8977 7500	<b>Siemon OEM Technologies</b> P: (1) 860 945 4213 <a href="http://www.siemon.com/OEM">www.siemon.com/OEM</a>				

