

UltraMAX™ Copper Connectivity System

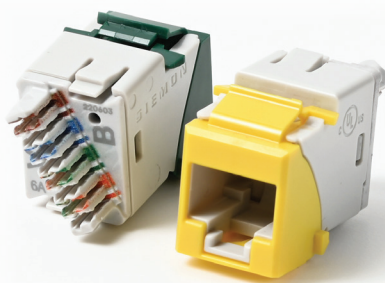
5e, 6, 6A UTP Outlets | Regional Availability — Global



The Siemon UltraMAX copper connectivity system utilizes a single platform of innovative outlets for your category 5e, 6 and 6A UTP requirements. The UltraMAX outlets are designed to maximize usability, quality and performance into a sleek footprint that's ideally suited for users to deliver quick, reliable terminations first time, every time.



Hybrid Outlet



Keystone Outlet

Intuitive Design

The hybrid outlets' compact design makes it ideal for high-density applications. Users also benefit from the "pass-thru" feature, which allows it to be mounted from either the front or rear of a faceplate. Hybrid outlets may be installed in a flat or angled orientation.

Multiple Options

All UltraMAX outlets are available in hybrid, keystone and patch panel mounting styles, providing users with a range of options to suit your various installation needs.

*Panel Outlet shown below.

1. Icon

Icons are ideal for both simple color-coding and easy application identification for your critical connections. Icons are not included with outlets and sold separately.

2. Bezel

Ideal for color-coding and flexible mounting, these colored bezels bring more than just aesthetics.

3. Outlet

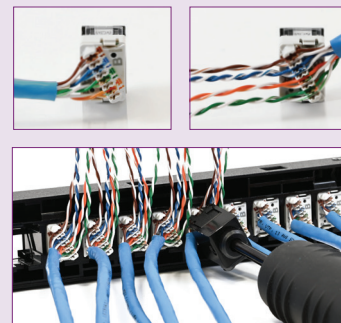
Our UL-listed outlets deliver a sleek and intuitive footprint as well as innovative linear lacing functionality.

4. Termination Cap

Keep your terminated cables secure and reliable with our removable termination cap.

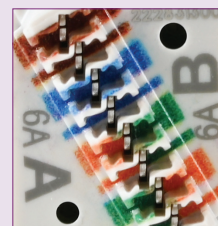


Panel Outlet



Versatile Installation

Each UltraMAX outlet features a unique linear lacing design which allows users to terminate their connections from either side and deliver fast, consistent terminations, every time.



Guided Termination

Distinct linear lacing channels guide correct conductor placement during termination, while 2-sided color-coding provides simple T568 A or B wiring verification before and after lacing.



Flexible Mounting

UltraMAX's hybrid bezel allows users to easily install outlets in a flat or angled orientation, while also providing a simple option for color-coding network connections.

ELECTRICAL SPECIFICATIONS

CONTACT RESISTANCE	20 mΩ
INPUT TO OUTPUT RESISTANCE	200 mΩ
MIN. DIELECTRIC WITHSTAND VOLTAGE (CONTACT TO CONTACT)	1000 V DC or AC peak
INSULATION RESISTANCE	500 MΩ
COMPATIBILITY	Category 5e, 6, and 6A
CURRENT RATING	1.5 A

MECHANICAL – GENERAL

OPERATING TEMPERATURE	-10 to 60 °C (14 to 140 °F)
FLAMMABILITY RATING	UL 94 V-0
ECO-FRIENDLY FEATURES	RoHS, Lead-free, Halogen-free, PVC-free, Eco-friendly packaging (bulk packaging only)
CONTACT MATERIALS	Copper alloy, plated with 1.27 microns (50 microinches) minimum thick gold or equivalent at contact interface
PLASTIC MATERIALS	Flame retardant thermoplastic
DIMENSIONS (L X W X H)	Hybrid Outlet: 33mm (1.3") x 15mm (0.6") x 21mm (0.83") Keystone Outlet: 33mm (1.3") x 15mm (0.6") x 21mm (0.83") Panel Mount Outlet: 31mm (1.2") x 15mm (0.6") x 20mm (0.8")

MECHANICAL – OUTLET

NUMBER OF INSERTION CYCLES	2,500
MINIMUM PLUG RETENTION FORCE	50N (11.2 lbf)
PLUG COMPATIBILITY	Compatible with RJ45 (8-position) or RJ11 (6-position) plugs



Data | Power | Reach | Delivered

MECHANICAL – TERMINATION

RECOMMENDED WIRE SIZE (NOMINAL)	22-24 AWG solid and 24-26 AWG stranded
WIRE INSULATION DIAMETER RANGE (MAX)	1.38mm (0.054")
CONDUCTOR OD SIZE (MAX)	0.60mm (0.023")
RE-TERMINATIONS	20
WIRING	T568A/B

COMPLIANCE

ISO/IEC 11801-1 Ed.1.0
IEC 60603-7-41
IEC 60512-99-002 (3 rd party verified)
ANSI/TIA-568.2-D
ANSI/TIA 1096-A
ETL Channel Tested
IEEE 802.3af (Type 1 PoE)
IEEE 802.3at (Type 2 PoE)
IEEE 802.3bt (Type 3 and 4 PoE)
Power over HDBaseT™ (PoH)
UL 2043 (air handling spaces)
UL 1863



Ordering Information

UltraMAX Outlets

U (X or XX) - (X) (XX) (X) (X)

PERFORMANCE CATEGORY	MOUNTING STYLE	BEZEL COLOR	DOOR OPTION	PACKAGE TYPE
5 = 5e UTP 6 = 6 UTP 6A = 6A UTP	H = Hybrid Flat/Angled K = Keystone* P = Panel**	00 = No Color** 01 = Black 02 = White 03 = Red 04 = Gray 05 = Yellow 06 = Blue 07 = Green 09 = Orange 20 = Ivory 80 = Light Ivory	N = No Door D = Door	S = Single Standard Pack A = 24-Count Bulk Pack*** B = 100-Count Bulk Pack***

*Keystone and panel versions are not compatible with icons and do not have door options.

**Use 00 for bezel color when specifying panel mount version. UltraMAX UTP panel outlets are designed for use with UltraMAX UTP panels only.

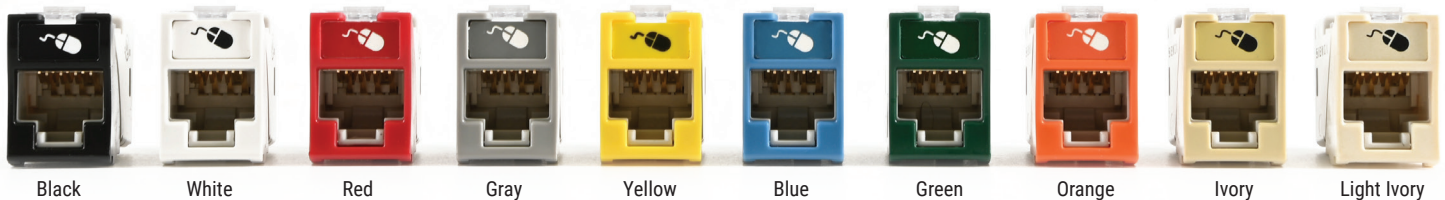
***Eco-friendly hybrid, keystone and panel outlet bulk packs sold with MoQ of 24 and 100 and order increment of 24 and 100 outlets.

Additional colors available upon request. Contact Siemon Customer Service for more information.

Termination caps are included with outlets.

Icons are not included with outlets and sold separately.

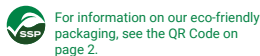
UltraMAX palm guard insert is included in each standard pack of 20 outlets and bulk pack of 24 and 100 outlets.



Door Option



Eco-Friendly Bulk Pack



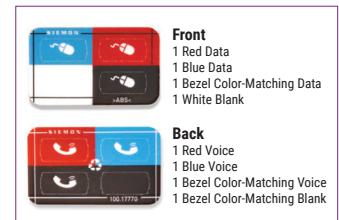
Termination Caps – Included with Outlets



Panel/Port Blank



Palm Guard Insert



Icons – Sold Separately

UltraMAX Accessories

Part Number	Description
U-TCAP	UltraMAX outlet termination cap, Box of 100
Z-BL-01	Panel Blank, Bag of 10, Black rubber, Fits in empty Z-MAX®/UltraMAX panel opening as well as any RJ-45 port for dust protection
Z-ICON-(XX) B	Icon, Z-MAX/UltraMAX, Box of 100 XX = Color 01 = Black 03 = Red 05 = Yellow 07 = Green 09 = Orange 25 = Bright White 82 = Alpine White 02 = White 04 = Gray 06 = Blue 08 = Violet 20 = Ivory 80 = Light Ivory

Siemon provides a variety of termination tools for UltraMAX outlets. View our full offering [here](#).

For information on the complete line of UltraMAX patch panels, click [here](#).

For information on the UltraMAX TurboTool, click [here](#).



SCAN TO DOWNLOAD
SPEC SHEET

Because we continuously improve our products, Siemon reserves the right to change specifications and availability without prior notice.

North America
P: (1) 860 945 4200

Mexico
P: (521) 556 387 7708/09/10

Latin America
P: (571) 657 1950/51/52

Europe
P: (44) 0 1932 571771

Asia Pacific
P: (61) 2 8977 7500

Siemon OEM Technologies
P: (1) 860 945 4213
www.siemon.com/OEM

China
P: (86) 215385 0303

India, Middle East & Africa
P: (971) 4 3689743