

# UltraMAX™ TurboTool

Regional Availability – Global



Siemon's easy-to-use and ergonomically designed UltraMAX TurboTool significantly reduces the time associated with the termination of category 5e, 6 and 6A UTP UltraMAX outlets. In contrast to a single conductor punchdown tools, which requires eight individual termination cycles for each outlet, the UltraMAX TurboTool seats and cuts all 8 conductors with a single termination action. This quality tool is rated for a minimum of 10,000 cycles, and allows users to consistently terminate high-performance connections with reliability and speed.



## 1. Rotatable Tool

Provides flexible cable entry enabling termination on either side of outlet to accommodate multiple cable pathway directions and bend radius compliance.



## 2. Durable Construction

Designed with 16 gauge steel and tough, high impact resistant plastics, this tool was built for the everyday rigors of the job site.

## 3. Ergonomic Design

The tool's spring-loaded handle has been designed with the user in mind, providing comfortable and simple one-handed terminations.

## 4. Termination Speed

Speeds up termination time by 15% over a single position punch-down tool process.

## 5. Safety Latch

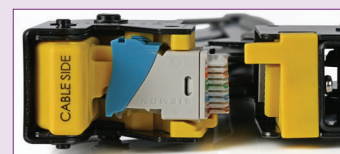
This integrated handle allows users to easily secure the handles for storage and protection between usage.

## 6. Replaceable Cutting Die

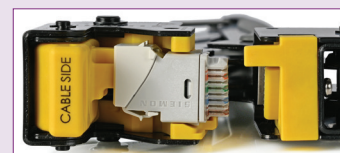
Users can easily replace the cutting die extending the lifetime of the tool for perfect terminations.

## Versatile Terminations

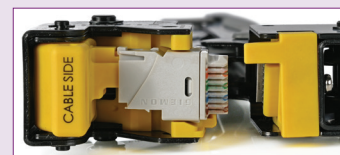
The tool supports termination of all category 5e, 6 and 6A UTP UltraMAX outlets – hybrid, keystone, and panel mount.



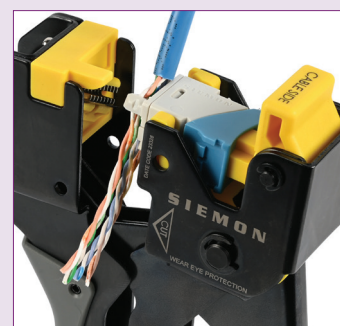
Hybrid Outlet



Keystone Outlet



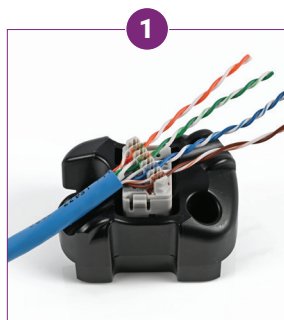
Panel Outlet



UltraMAX's unique linear lacing channels allow users to terminate their connections from either side in one simple action.

# Product Information

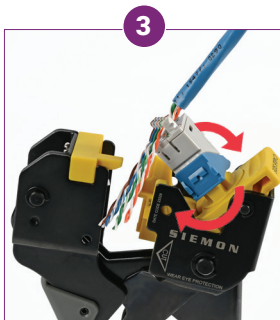
## UltraMAX® OUTLET TERMINATION



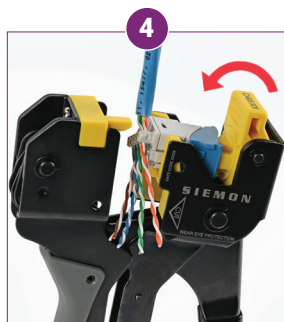
Lace in conductors (shown with outlet mounted in palm guard insert).



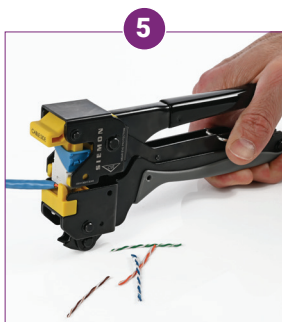
Load outlet onto the TurboTool (lever of tool shown opened).



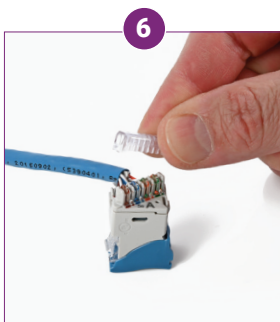
Rotate outlet with cable side up.



Swing lever back down to cutting position.



Squeeze handles to quickly terminate outlet and trim conductors.



Install termination cap.

## MECHANICAL – GENERAL

OPERATING TEMPERATURE	-10 to 60 °C (14 to 140 °F)
PLASTIC MATERIALS	Flame retardant thermoplastic
DIMENSIONS (L X W X H)	208mm (8.18") x 97mm (3.81") x 31mm (1.22")
LIFE CYCLE	Tool: 10,000, Blade: 2,000 typical
CONSTRUCTION MATERIAL	16 gauge steel, Black oxide
UTP CABLE RECOMMENDED WIRE SIZE (NOMINAL)	22-24 AWG solid and 24-26 AWG stranded

## UltraMAX OUTLETS DELIVER!

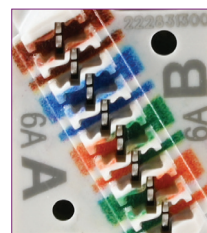


### Intuitive Design

The hybrid outlets' compact design makes it ideal for high-density applications. Users also benefit from the "pass-thru" feature, which allows it to be mounted from either the front or rear of a faceplate. Hybrid outlets may be installed in a flat or angled orientation.

### Multiple Options

All UltraMAX outlets are available in hybrid, keystone and patch panel\* mounting styles, providing users with a range of options to suit your various installation needs.



### Guided Termination

Distinct linear lacing channels guide correct conductor placement during termination, while 2-sided color-coding provides simple T568 A or B wiring verification before and after lacing.

## Ordering Information

Part Number	Description
UMAX-TT	UltraMAX TurboTool
UMAX-TT-D	UltraMAX TurboTool Replacement Cutting Die

For information on the complete line of UltraMAX outlets, click [here](#).

For information on the complete line of UltraMAX patch panels, click [here](#).

Because we continuously improve our products, Siemon reserves the right to change specifications and availability without prior notice.

**North America**  
P: (1) 860 945 4200

**Mexico**  
P: (521) 556 387 7708/09/10

**Latin America**  
P: (571) 657 1950/51/52

**Europe**  
P: (44) 0 1932 571771

**China**  
P: (86) 215385 0303

**India, Middle East & Africa**  
P: (971) 4 3689743

**Asia Pacific**  
P: (61) 2 8977 7500

**Siemon OEM Technologies**  
P: (1) 860 945 4213  
[www.siemon.com/OEM](http://www.siemon.com/OEM)

[www.siemon.com/ultramax](http://www.siemon.com/ultramax)

