

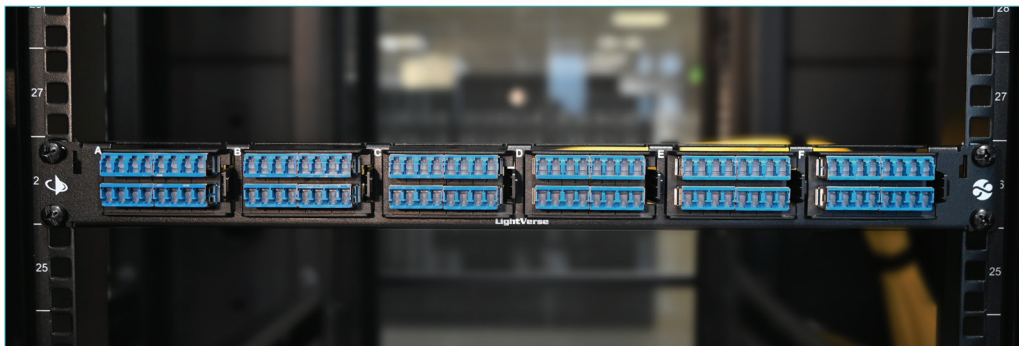
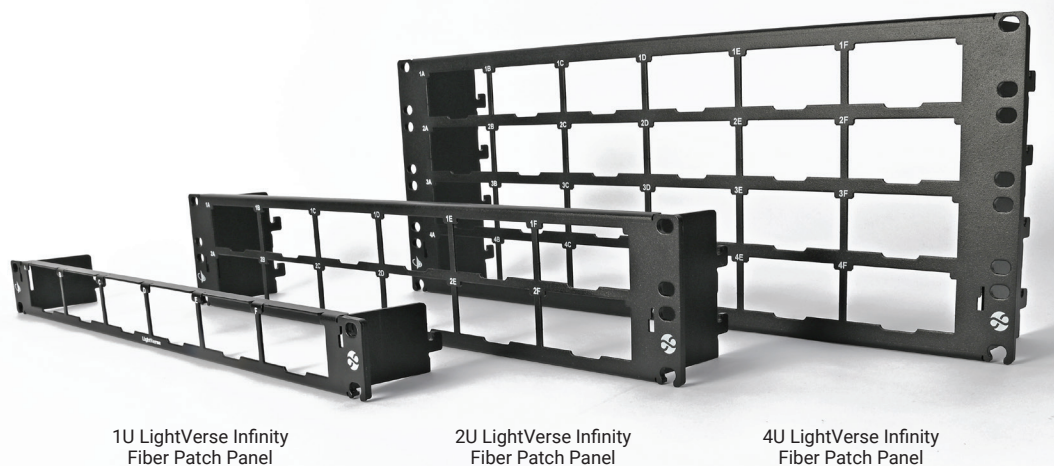
LightVerse® Infinity Connectivity System

16 Fiber Count Patch Panels | Regional Availability – Global



The Siemon LightVerse Infinity system was designed to support a wide range of 16-fiber LC applications as well as MTP and copper adapters to provide a versatile range of configurations capable of supporting complex network demands. The LightVerse Infinity system include a range of flat patch panels and a wide array of adapter plates.

Available in 1U, 2U and 4U configurations, the LightVerse Infinity Fiber Patch Panels support up to 96 LC fibers per rack unit, divided into 6x 16-fiber sections. The LightVerse Infinity Patch Panels are also supported with optional toolless front and rear cable managers, offering best-in-class fiber cable management.



Scalable Connectivity

The LightVerse Infinity Fiber Patch Panels are available in 1U (up to 96 fibers), 2U (up to 192 fibers) and 4U (up to 384 fibers) and support our comprehensive range of LC and MTP fiber adapter plates as well as the Infinity 4-port copper adapter plate.

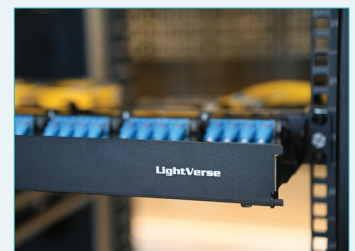
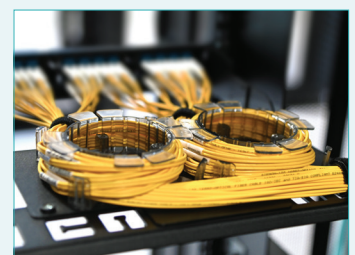
Compact Design

The LightVerse Infinity Fiber Patch Panels provide a slimline and yet robust footprint. Constructed from high strength steel with a scratch-resistant finish, users can connect their critical connectivity with confidence.

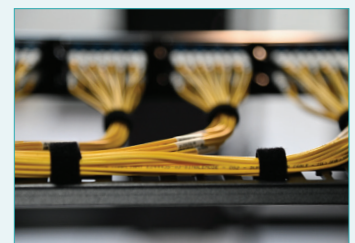
Improved Accessibility

Our patch panels improve hand access to connectivity especially in Cable Tray Rack (CTR) overhead applications, providing 360 degree access from the front and rear or from above and below.

Optimized Cable Management



Optional toolless front and rear cable managers are also available to support the LightVerse Infinity Fiber Patch Panels. This allows users to easily and safely control their fiber optic cabling and allows MAC work to be actioned easily, all while maintaining optimum performance.



One removable rear cable manager per rack unit, providing users with an easily scalable design to match their network requirements.

Product Information

MECHANICAL

LightVerse® Infinity Fiber Patch Panels

OPERATING TEMPERATURE	-20 to 70° C (-4 to 158° F)
DIMENSIONS (L X W X H)	1U Patch Panel: 482.6mm (19") x 68.45mm (2.695") x 43.12mm (1.698") 2U Patch Panel: 482.6mm (19") x 68.45mm (2.695") x 87.50mm (3.445") 4U Patch Panel: 482.6mm (19") x 68.45mm (2.695") x 176.47mm (6.948")
MOUNTING CAPABILITY	CEA-310-E 482.6mm (19") rack
CONSTRUCTION MATERIAL	Patch Panel: 16 gauge cold rolled steel, Black powder coat Bracket: 11 gauge cold rolled steel, Black powder coat

Adapter Plates

OPERATING TEMPERATURE	-20 to 70° C (-4 to 158° F)
DIMENSIONS (L X W X H)	72mm (2.82") x 33.5mm (1.32") x 25.4mm (0.99")
ECO-FRIENDLY FEATURES	RoHS, Lead-free, Halogen-free, PVC-free, ECO-friendly packaging
PLASTIC MATERIAL	Flame-retardent thermoplastic

Front Cable Manager

OPERATING TEMPERATURE	-20 to 70° C (-4 to 158° F)
FLAMMABILITY RATING	UL 94 V-0
DIMENSIONS (L X W X H)	1U Front Cable Manager: 454.50mm (17.894") x 154.5mm (6.083") x 42.05mm (1.656") 2U Front Cable Manager: 459.90mm (18.106") x 154.5mm (6.083") x 83.65mm (3.293") 4U Front Cable Manager: 459.90mm (18.106") x 154.5mm (6.083") x 169.25mm (6.663")
CONSTRUCTION MATERIAL	Base: 16 gauge cold rolled steel, Black powder coat Door: 20 gauge cold rolled steel, Black powder coat

Rear Cable Manager

OPERATING TEMPERATURE	-20 to 70° C (-4 to 158° F)
DIMENSIONS (L X W X H)	455mm (18") x 214mm (8.43") x 28mm (1.10")
CONSTRUCTION MATERIAL	14 gauge cold rolled steel, Black powder coat

Fiber Spool Kit

OPERATING TEMPERATURE	-20 to 70° C (-4 to 158° F)
FLAMMABILITY RATING	UL 94 V-0
PLASTIC MATERIALS	Flame retardant thermoplastic
DIMENSIONS (L X W X H)	213mm (8.39") x 120mm (4.72") x 7mm (0.28")
CONSTRUCTION MATERIAL	20 gauge cold rolled steel, Black powder coat

COMPLIANCE

ISO/IEC 11801 (Patch panels)
CEA-310-E
RoHS, Lead-free, Halogen-free, PVC-free; ISO 9001:2015
IEC-62368-1 Ed 2 (Patch panels, front and rear cable managers, fiber spool kit)



Eco-Friendly Packaging:

In line with our ongoing commitment to sustainability, the packaging for this solution is RoHS, lead-free, halogen-free and PVC-free.



Scan here to learn more about the Siemon Sustainability Pledge.

Ordering Information

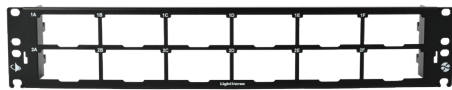
LightVerse® Infinity Fiber Patch Panels

Part Number	Description
LNP-1U-MS-A01A	LightVerse Infinity Fiber Patch Panel, Flat, 1U
LNP-2U-MS-A01A	LightVerse Infinity Fiber Patch Panel, Flat, 2U
LNP-4U-MS-A01A	LightVerse Infinity Fiber Patch Panel, Flat, 4U

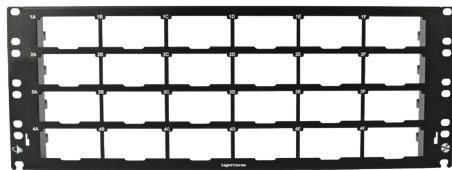
Panels include mounting hardware.



1U LightVerse Infinity Fiber Patch Panel



2U LightVerse Infinity Fiber Patch Panel



4U LightVerse Infinity Fiber Patch Panel

Related Products

Part Number	Description
LV-FCM-1U-01A	Front Cable Manager, 1U
LV-FCM-2U-01A	Front Cable Manager, 2U
LV-FCM-4U-01A	Front Cable Manager, 4U
LV-RCM-1U-01A	Rear Cable Manager*
LV-RSM-KIT-A	Fiber Spool Kit for Rear Cable Manager

*Rear Cable Manager can be used on all patch panel options:
1U PP = 1 RCM • 2U PP = up to 2 RCMs • 4U PP = up to 4 RCMs



Rear Cable Manager

Fiber Spool Kit for Rear Cable Manager



1U Front Cable Manager

2U Front Cable Manager



4U Front Cable Manager

Our front cable managers provide protection for your fiber jumpers and include an integrated label holder, allowing users to easily access and manage their connections.

LightVerse® Infinity Adapter Plates

Part Number	Description
LNA-MX4-01A	LightVerse Infinity 4-Port Copper Adapter Plate (compatible with UTP UltraMAX and Z-MAX hybrid outlets*)
LNA-BLANK-01A	LightVerse Infinity Blank Adapter Plate
LNAM2-MPB-BN-A	LightVerse Infinity Duplex MTP Adapter Plate, Black Adapter, Type-A (Key Up/Key Down), 2 Ports
LNAM2-MPQ-BN-A	LightVerse Infinity Duplex MTP Adapter Plate, Aqua Adapter, Type-A (Key Up/Key Down), 2 Ports
LNAM2-MPG-BN-A	LightVerse Infinity Duplex MTP Adapter Plate, Gray Adapter, Type-A (Key Up/Key Up), 2 Ports
LNAM2-MPE-BN-A	LightVerse Infinity Duplex MTP Adapter Plate, Erika Violet Adapter, Type-A (Key Up/Key Down), 2 Ports
LNAM4-MPB-BN-A	LightVerse Infinity Duplex MTP Adapter Plate, Black Adapter, Type-A (Key Up/Key Down), 4 Ports
LNAM4-MPQ-BN-A	LightVerse Infinity Duplex MTP Adapter Plate, Aqua Adapter, Type-A (Key Up/Key Down), 4 Ports
LNAM4-MPG-BN-A	LightVerse Infinity Duplex MTP Adapter Plate, Gray Adapter, Type-A (Key Up/Key Up), 4 Ports
LNAM4-MPE-BN-A	LightVerse Infinity Duplex MTP Adapter Plate, Erika Violet Adapter, Type-A (Key Up/Key Down), 4 Ports
LNAM8-MPB-BN-A	LightVerse Infinity Duplex MTP Adapter Plate, Black Adapter, Type-A (Key Up/Key Down), 8 Ports
LNAM8-MPQ-BN-A	LightVerse Infinity Duplex MTP Adapter Plate, Aqua Adapter, Type-A (Key Up/Key Down), 8 Ports
LNAM8-MPG-BN-A	LightVerse Infinity Duplex MTP Adapter Plate, Gray Adapter, Type-A (Key Up/Key Up), 8 Ports
LNAM8-MPE-BN-A	LightVerse Infinity Duplex MTP Adapter Plate, Erika Violet Adapter, Type-A (Key Up/Key Down), 8 Ports
LNA16-LSA-BC-A	LightVerse Infinity 16-Fiber, Shuttered LC, Green Adapter Plate, Ceramic Sleeve
LNA16-LSU-BC-A	LightVerse Infinity 16-Fiber, Shuttered LC, Blue Adapter Plate, Ceramic Sleeve
LNA16-LSQ-BC-A	LightVerse Infinity 16-Fiber, Shuttered LC, Aqua Adapter Plate, Ceramic Sleeve
LNA16-LSE-BC-A	LightVerse Infinity 16-Fiber, Shuttered LC, Erika Violet Adapter Plate, Ceramic Sleeve

*May also be used with shielded Z-MAX hybrid and TERA outlets only if used in conjunction with a shielded Z-MAX or TERA-MAX panel at the opposite end of the link to ensure proper grounding.



LightVerse Infinity 16-Fiber LC Adapter Plate



LightVerse Infinity 4-Port Copper Adapter Plate



LightVerse Infinity Blank Adapter Plate



LightVerse Infinity 2-Port MTP Adapter Plate



LightVerse Infinity 4-Port MTP Adapter Plate



LightVerse Infinity 8-Port MTP Adapter Plate



Siemon provides a range of high-performance fiber connectivity options supporting our LightVerse Infinity Fiber Patch Panels. These include:

- [Traditional Fiber Trunks](#)
- [MTP-to-LC/SC Trunks](#)
- [MTP-to-MTP Trunks](#)
- [LC Patch Cords](#)



SCAN TO DOWNLOAD
SPEC SHEET

Because we continuously improve our products, Siemon reserves the right to change specifications and availability without prior notice.

North America
P: (1) 860 945 4200

Asia Pacific
P: (61) 2 8977 7500

Mexico
P: (521) 556 387 7708/09/10

Siemon OEM Technologies
P: (1) 860 945 4213
www.siemon.com/OEM

Latin America
P: (571) 657 1950/51/52

China
P: (86) 215385 0303

Europe
P: (44) 0 1932 571771

India, Middle East & Africa
P: (971) 4 3689743